



REV 1.3

INSTALLATION GUIDE

Fastrax GPS Evaluation Kit Drivers

This document guides how to install the USB-to-serial bridge drivers for Fastrax GPS Evaluation Kit

July 27th , 2010

Fastrax Ltd.

TRADEMARKS

iTrax™, iSuite™, iSys™ and iTalk™ are trademarks of Fastrax Ltd.

Microsoft Windows NT®, Microsoft Windows 2000®, Microsoft Windows XP®, and Microsoft Visual C++® are registered trademarks of Microsoft® Corporation.

CHANGE LOG

| Rev. | Notes | Date |
|------|--------------------------------|------------|
| 0.1 | First Draft | 2007-10-10 |
| 1.0 | First Release | 2007-10-25 |
| 1.2 | Included Windows Vista Support | 2007-11-06 |
| 1.3 | Included Windows 7 Support | 2010-07-27 |
| | | |
| | | |

CONTENTS

| | |
|--|----|
| REV 1.3 | 1 |
| FASTRAX GPS EVALUATION KIT DRIVERS | 1 |
| 1. GENERAL DESCRIPTION | 5 |
| 2. INSTALLATION | 6 |
| 3. DEVICES..... | 10 |
| 4. EVALUATION SOFTWARE..... | 11 |

COMPLEMENTARY READING

The following Fastrax reference documents are complementary reading for this document.

To download Evaluation Software for iTrax300 family, please contact support@fastrax.fi. For iTrax03 and iTrax130 families, go to <http://isuite.fastrax.fi>

| Ref. # | File name | Document name |
|--------|------------------------|--|
| 1 | MEV-KTB_Tech_doc_revXX | The technical description of Fastrax Mini-Evaluation kit |
| | | |
| | | |
| | | |
| | | |

1. **GENERAL DESCRIPTION**

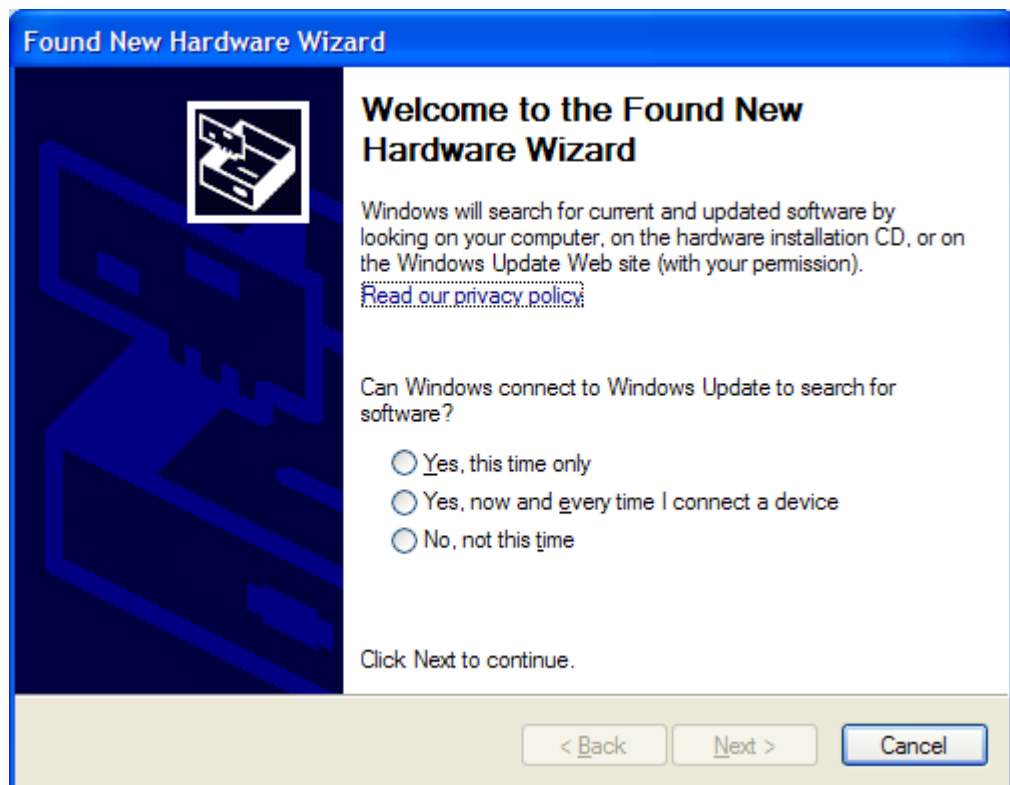
The Fastrax Mini-evaluation kit uses single chip USB to UART Bridge. This document describes the procedure to install drivers for this device.

2. INSTALLATION

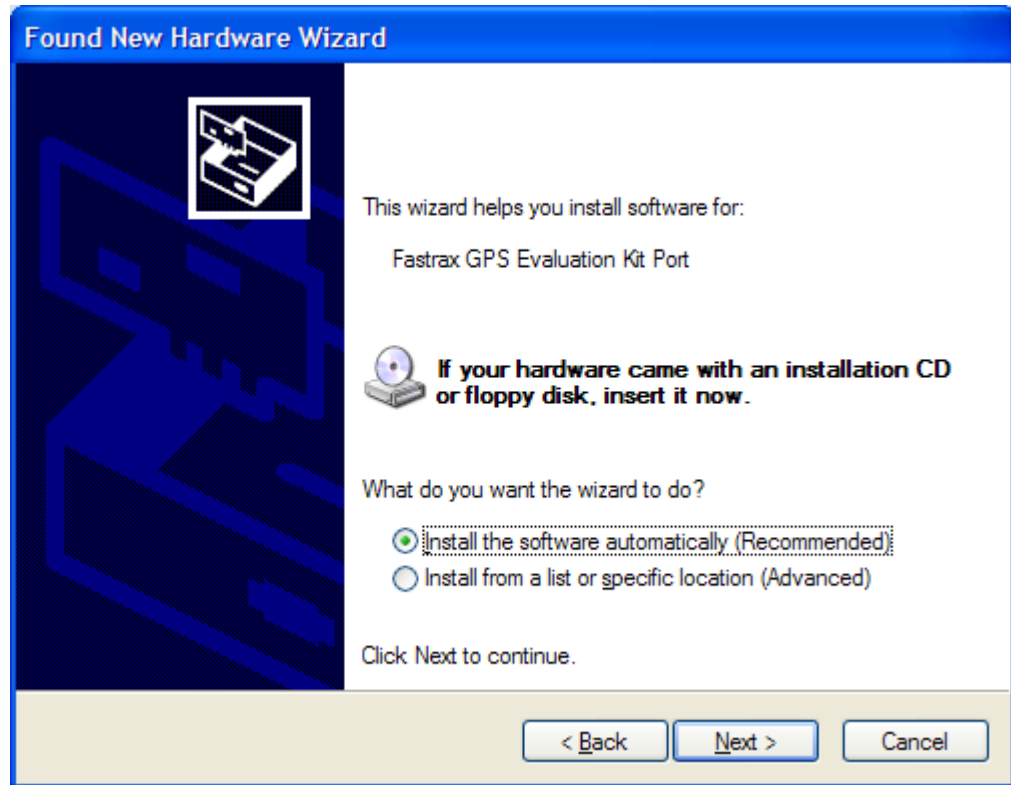
This Driver supports Microsoft Windows 2000, Windows XP and Windows Vista 32 bit-versions. This driver also supports all versions of Windows 7 (including the x64 version). Windows XP and Windows Vista 64-bit versions are not supported.

To Install the driver, follow the procedure below. The procedure described below is for Windows XP.

- a) Make sure that GPS module/ application board is not connected into evkit.
- b) Connect USB cable to evaluation kit's port 0 and into PC's USB port
- c) Connect Fastrax Miniature GPS Evaluation Kit to a free USB port on your computer with the cable supplied.
- d) "Found new hardware" Wizard will appear:



- If you are requested to connect to “Windows Update” Select **“No, not at this time”**. Then click **“Next”**.



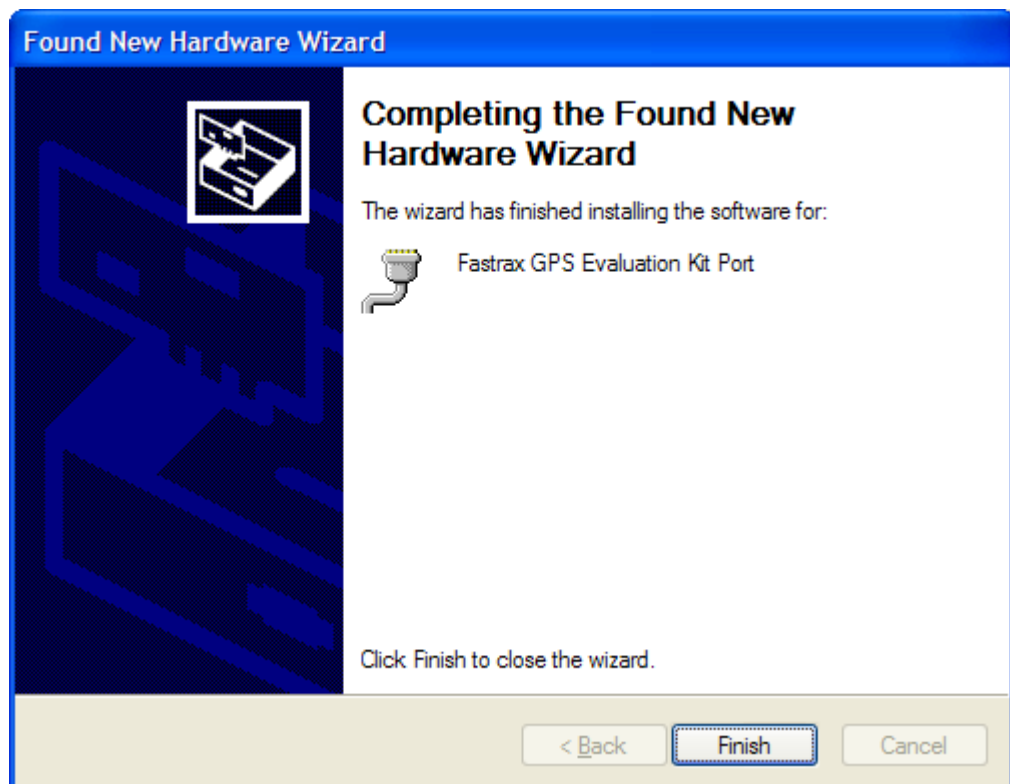
- If you have Fastrax GPS Evaluation Kit driver CD, **insert the CD to you CD drive** and select **“Install the software Automatically”**
- If you do NOT have the CD but have downloaded the drivers from Fastrax web site and have them stored on your computer, select **“Install from a list or specific location”**.
- If you do not have the drivers, please contact support@fastrax.fi

When driver installation starts, you will be prompted with the following dialog:



Click "**Continue anyway**":

If installation is successful, the Fastrax GPS Evaluation Kit port is available for use (See next chapter: Devices)



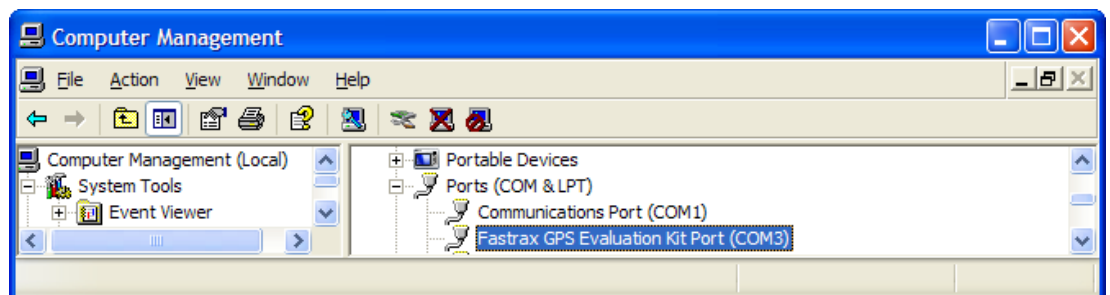
Please note: When booting the windows, it is possible that the evaluation kit with application board outputting NMEA data is detected as ball-point mouse by windows. This will cause the effect that mouse cursor will jump around the screen. To avoid this, remove application board in every reboot of your PC or disable ballpoint mouse driver from device manager.

3. DEVICES

The following devices were installed to your system:

COM Device Name: Fastrax GPS Evaluation Kit Port

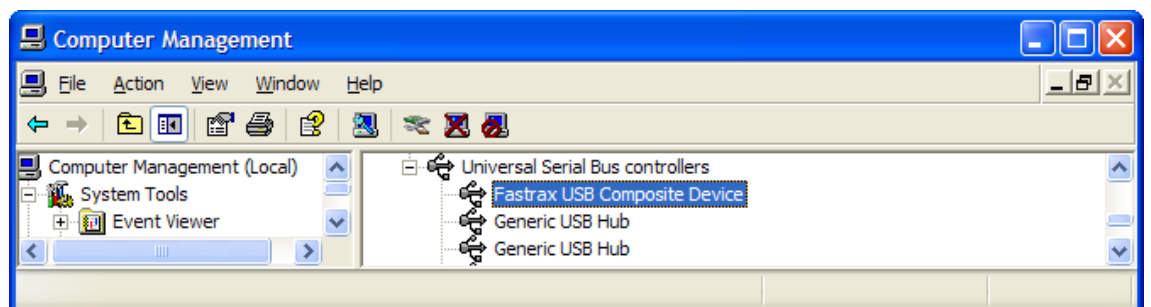
- This name appears in **Device Manager** under the Ports tab and in the Add/Remove Programs listing. Please check the installed port number to use it from your Evaluation Software.



When you use the device, please select the indicated COM port (COM3 in this example) from you evaluation software.

USB Device Name: Fastrax USB Composite Device

- This name appears in Device Manager under the USB tab



4. EVALUATION SOFTWARE

Evaluation software for iTrax03 and iTrax130 families is available from <http://suite.fastrax.fi>

To receive evaluation software for iTrax300 families or if you cannot find what you need, please contact support@fastrax.fi